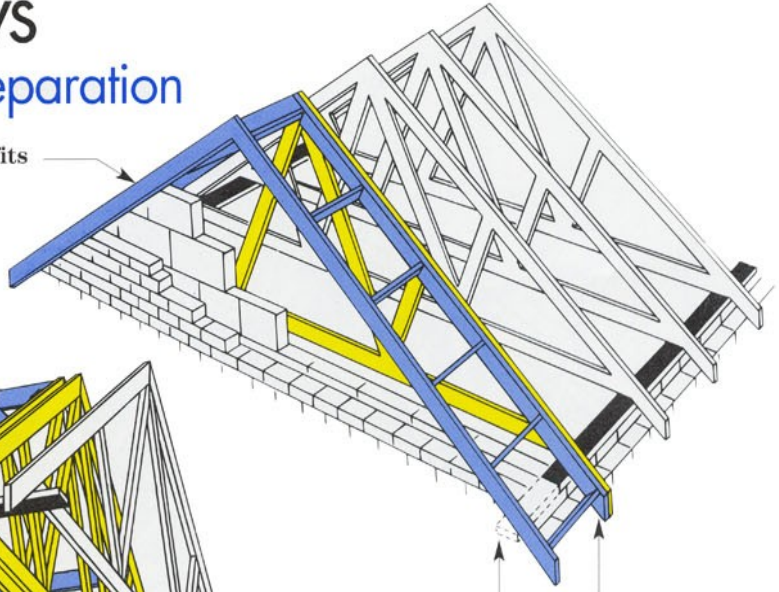


Gable ladders, hatches and chimneys

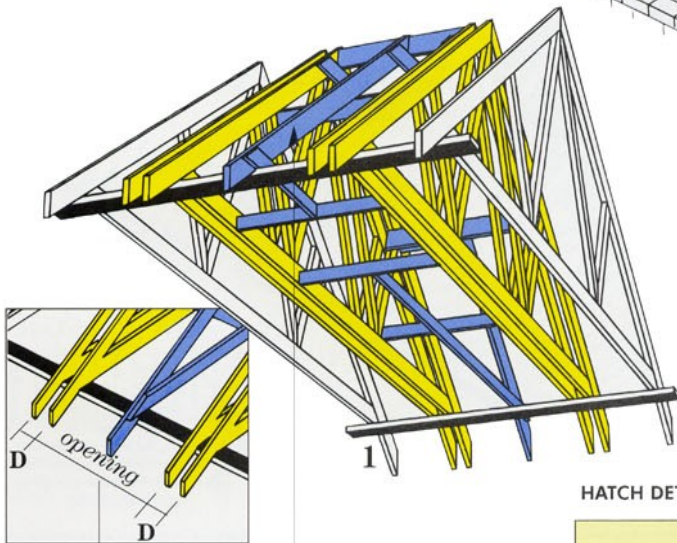
Recommended preparation

Bargeboards and Soffits to be nailed directly to the gable ladder



Gable Ladders to be fixed directly to last truss with nails at 400mm centres

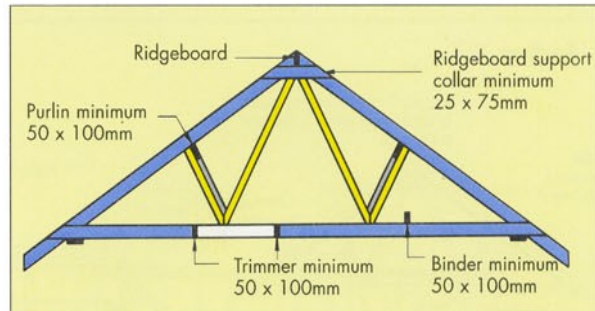
Wallplate may be extended over the gable ladder width for added support if required



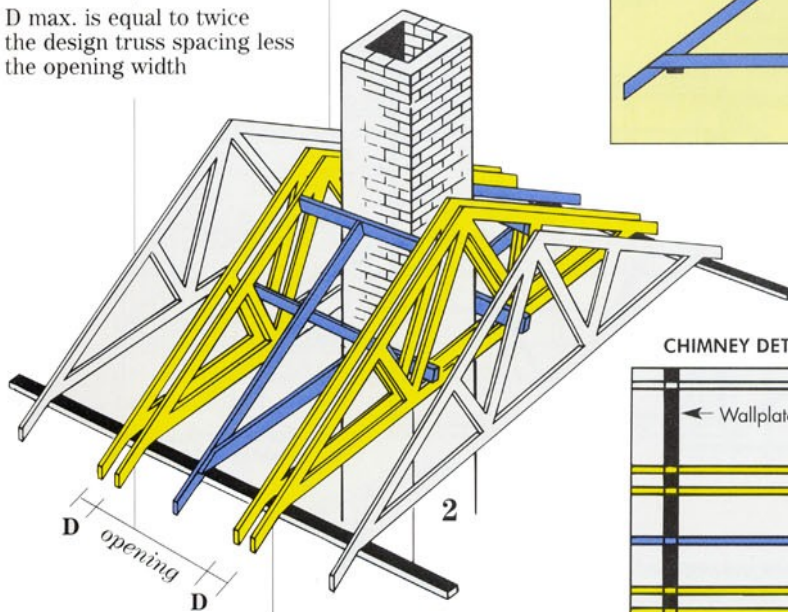
Jack Rafter 25mm deeper than trussed rafter and birdmouthed over wallplate

D max. is equal to twice the design truss spacing less the opening width

HATCH DETAIL

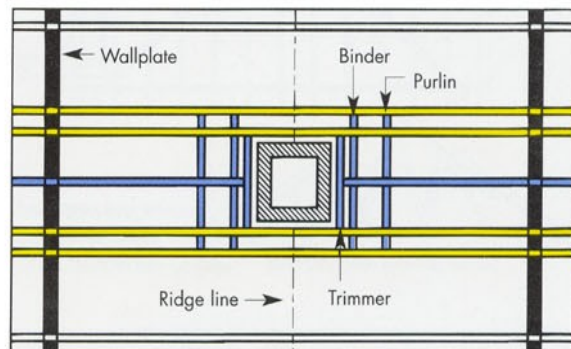


Hatch and chimney openings: Whenever possible hatch openings should be accommodated within the trussed rafter design spacing. When this is not possible the method illustrated 1 and 2 should be used.



Jack Ceiling Joist nailed to side of jack rafter, size to match bottom chord of trussed rafter

CHIMNEY DETAIL



All timbers must be at least 50mm clear of the chimney brickwork