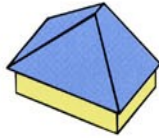


Flat top hip



The horizontal top chords to the flat top trusses are to be well braced together to resist lateral buckling

Infill Ceiling Joists

Infill Jack Rafter
to be a minimum of 25mm deeper than trussed rafter members to allow for birdmouthing at wallplate

Mono Pitch Trusses
supplied with extended rafters for site cutting to suit hip boards

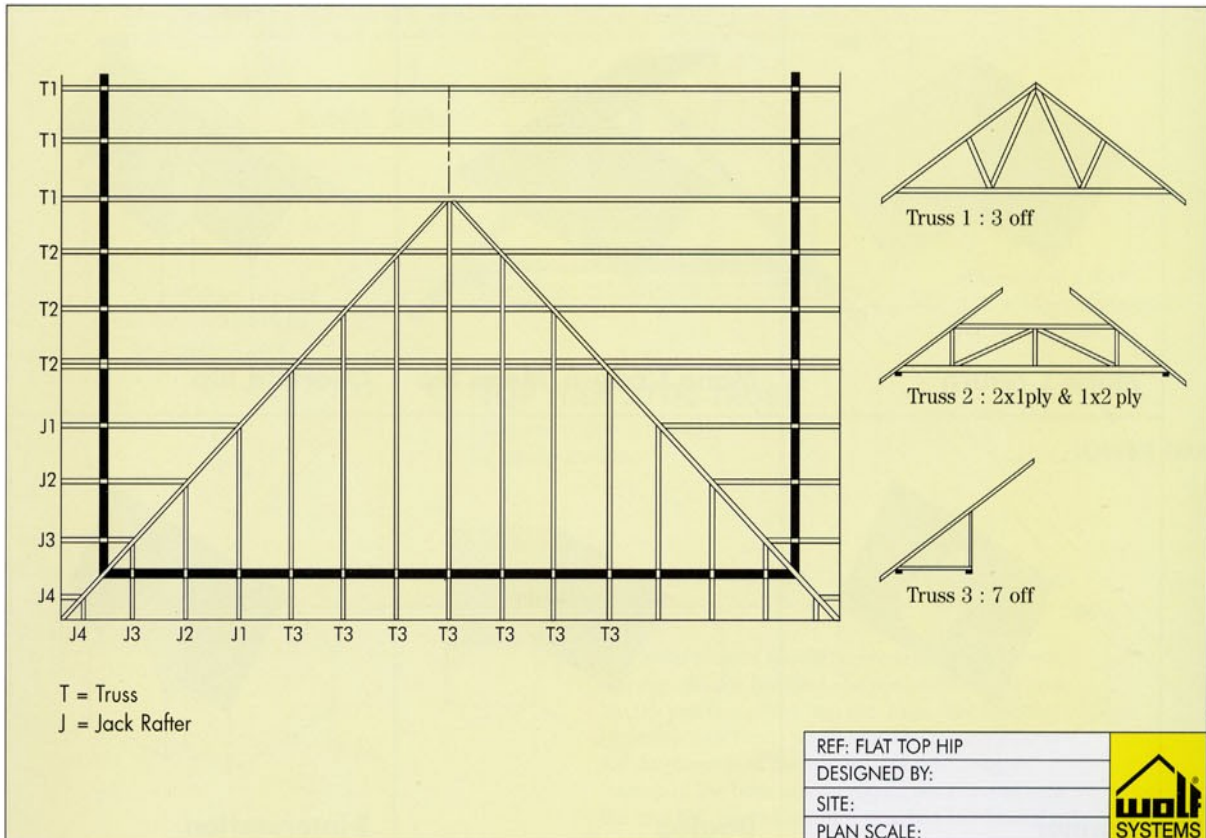
Noggings to be nailed to ceiling joist and side of jack rafter

Hip Boards to be birdmouthed over the compound girder of flat top trusses and over the wallplate

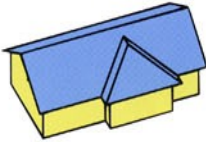
Compound Girder of Flat Top Trusses
permanently fixed together

Standard Trusses to Main Roof

Flat Top Trusses
supplied with extended rafters for site cutting to suit hip boards



Overlaid hip



Standard Trusses with overhang removed on one side

Set of four Valley Frames including two special flat top frames purpose made to spread imposed load

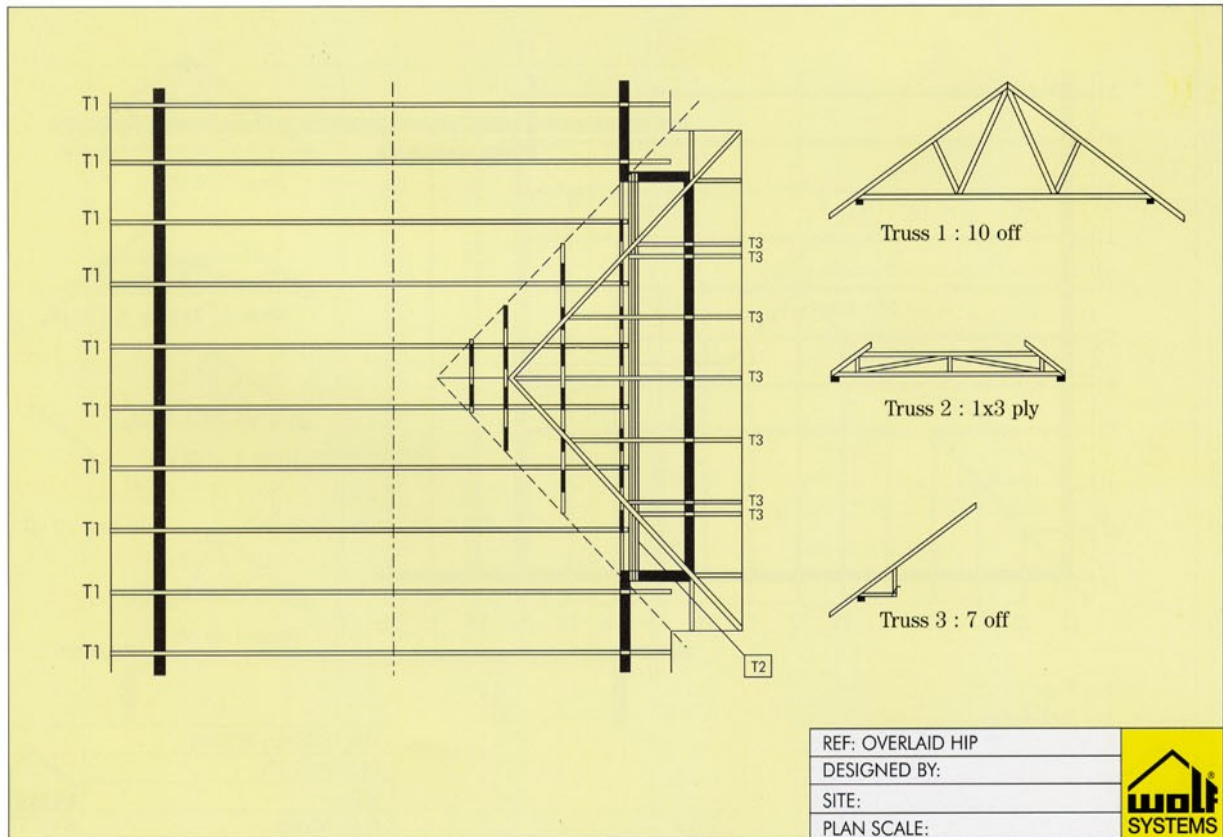
Standard Trusses to Main Roof

Standard Trusses to Main Roof

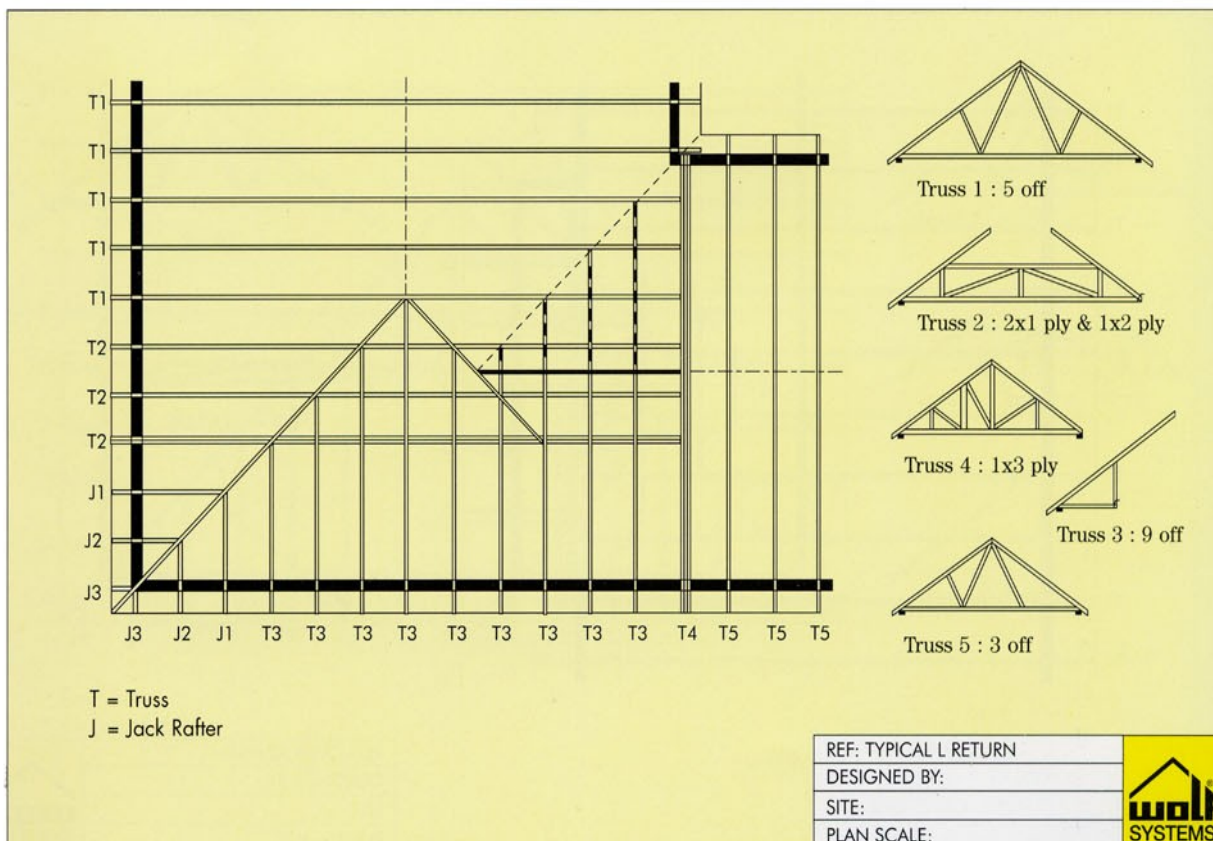
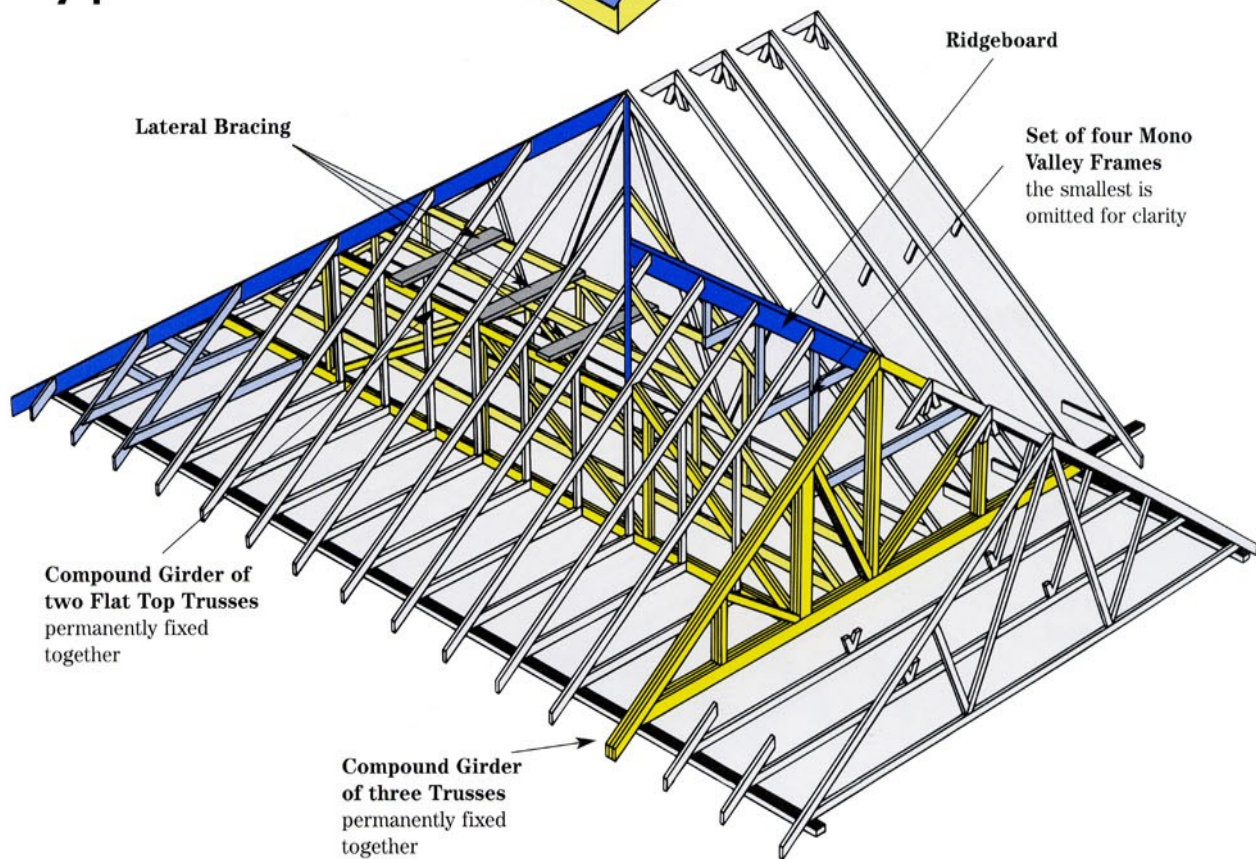
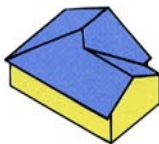
Valley frames are designed to transfer the tile loading uniformly to the top chords of the underlying trusses, and should be used in all cases rather than constructing this area with common infill timber.

Compound Girder of three Flat Top Trusses permanently fixed together

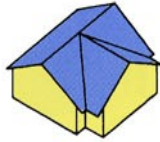
Hip Boards to be birdmouthed over compound girder of flat top trusses and over wallplate



Typical L return



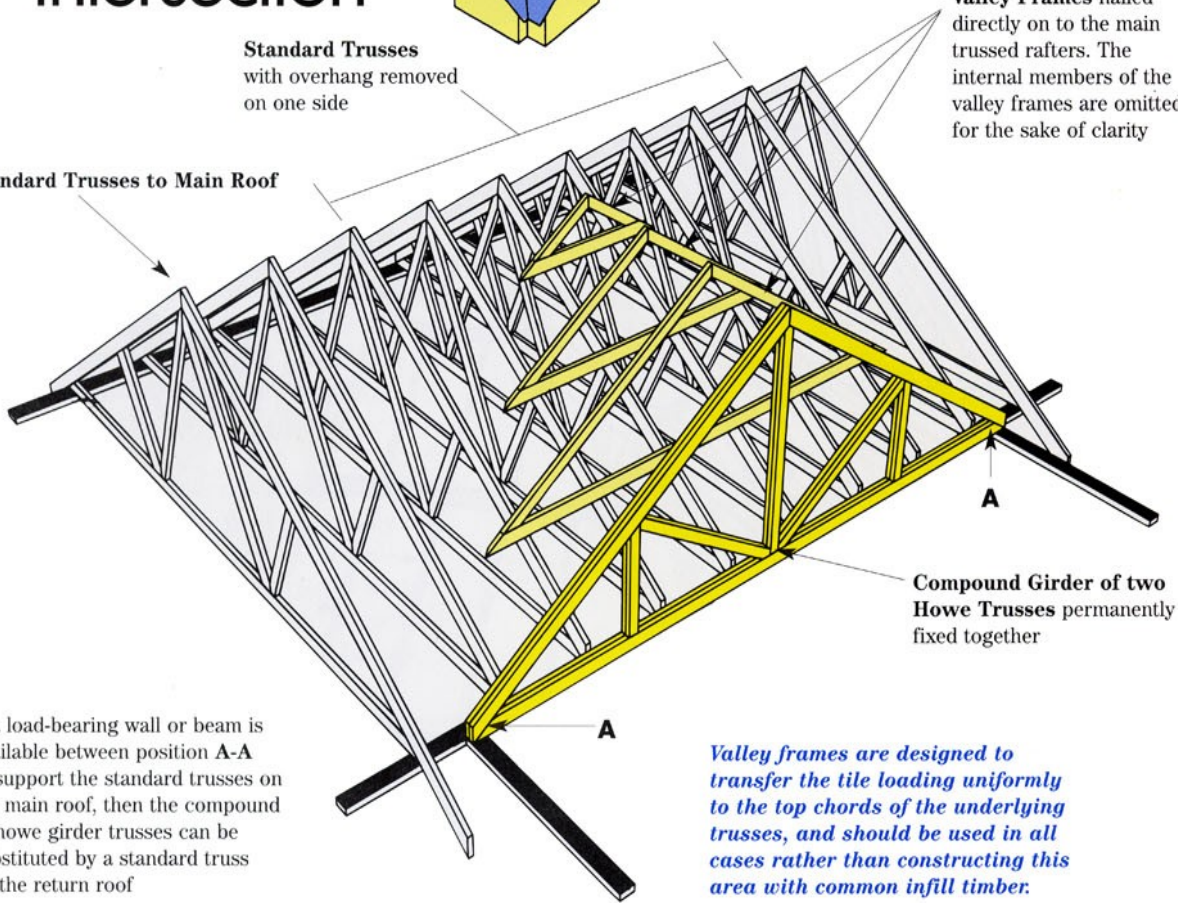
T-intersection



Standard Trusses with overhang removed on one side

Set of three diminishing Valley Frames nailed directly on to the main trussed rafters. The internal members of the valley frames are omitted for the sake of clarity

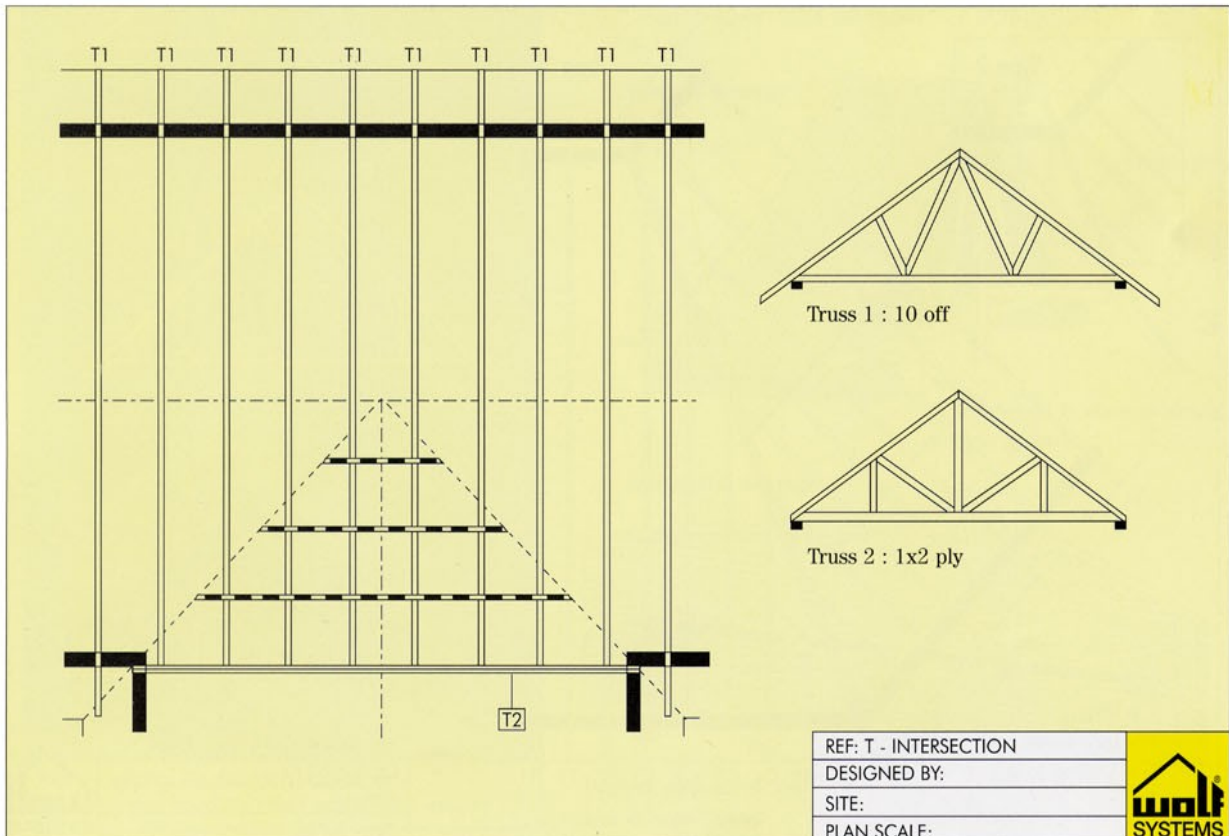
Standard Trusses to Main Roof



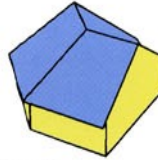
Compound Girder of two Howe Trusses permanently fixed together

If a load-bearing wall or beam is available between position A-A to support the standard trusses on the main roof, then the compound of howe girder trusses can be substituted by a standard truss on the return roof

Valley frames are designed to transfer the tile loading uniformly to the top chords of the underlying trusses, and should be used in all cases rather than constructing this area with common infill timber.



Dogleg intersection



The five roofscapes illustrated in this section are those most commonly constructed. There are many other ways of framing hips, corners, intersections etc. with trussed rafters. Please contact us for help and specific details.

